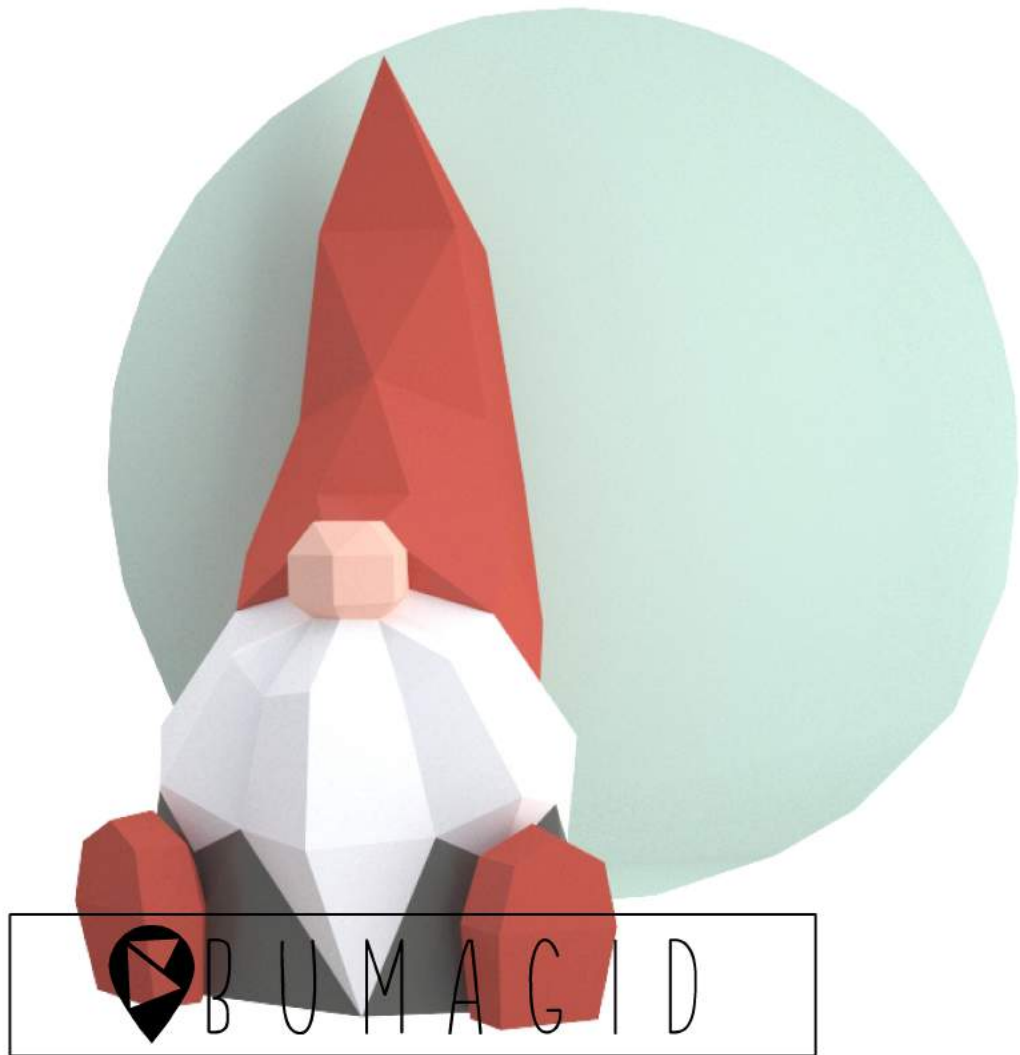


GNOME

— 300 x 170 x 150 mm —



▣ LEVEL ●●○○○

▣ 28 PARTS

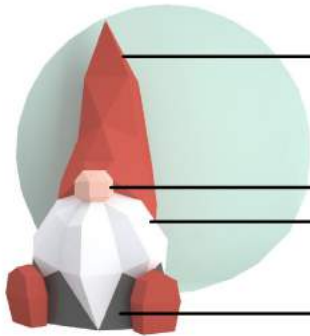
▣ TIME TO CREATE ~ 4 TO 6 HOURS

PDF FILES ARE PROVIDED SOLELY FOR A PLEASANT PASTIME, CAN NOT BE USED FOR COMMERCIAL PURPOSES

ASSEMBLY STEPS

STEP 1/ PRINT THE PARTS TO THE PRINTER

LIST OF REQUIRED SHEETS:



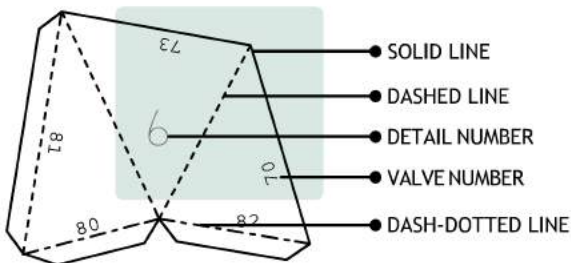
- 1-GNOME CAP/BOOTS 2pages_byBumagid
- 2-GNOME NOSE 1pages_byBumagid
- 3-GNOME BEARD 1pages_byBumagid
- 4-GNOME BODY 1pages_byBumagid

A4 PAPER SIZE

THICKNESS 160-300 gsm

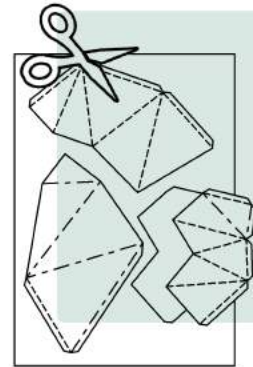


STEP 2/ CUT OUT DETAILS



CUT ALONG SOLID LINES

USE SCISSORS OR
A BREADBOARD KNIFE



STEP 3/ INCISE AND BEND DETAILS

RUN THE BACK OF THE KNIFE
ALONG ALL THE FOLD LINES



OTHERS OPTION:

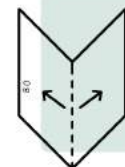


AWL



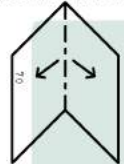
NEEDLE COMPASS

BEND ACCORDING TO TYPE OF LINE



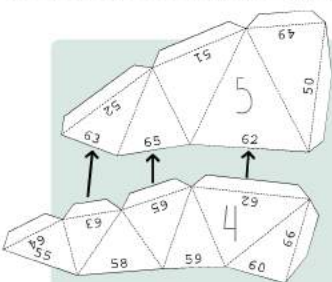
VALLEY FOLD

MOUNTAIN FOLD



STEP 4/ GLUE THE DETAILS TOGETHER

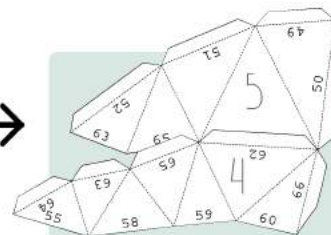
CONNECT VALVES WITH THE SAME NUMBERS



DON'T GET TOO FAR AHEAD.
GLUE ONE OR TWO TABS AT A TIME



APPLY GLUE TO THE VALVE



CONTACT

IF YOU HAVE ANY QUESTIONS,
PLEASE CONTACT ME
[ETSY.COM/SHOP/BUMAGID](https://www.etsy.com/shop/bumagid)

Вумэгід. The file is protected by copyright. Not for sale. Файл захищен авторским правом. Не для продажи.

CAP



1



2



3

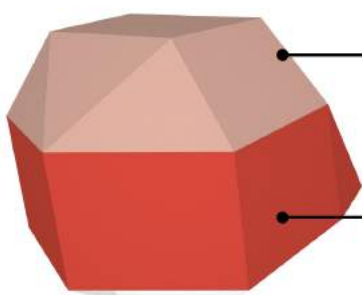


4



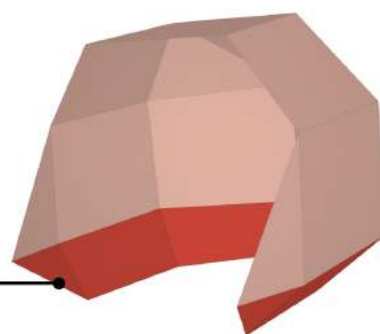
5

NOSE



6

7



8

CONNECT THE NOSE

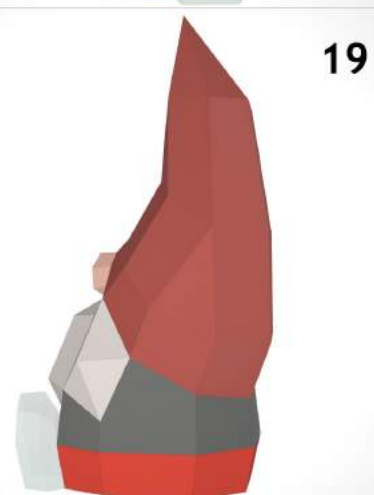
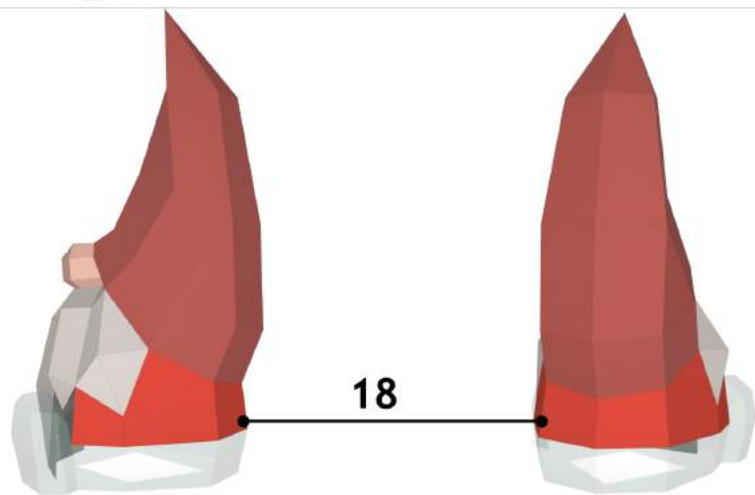
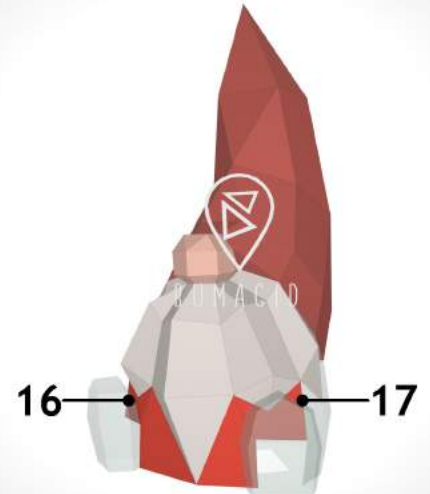
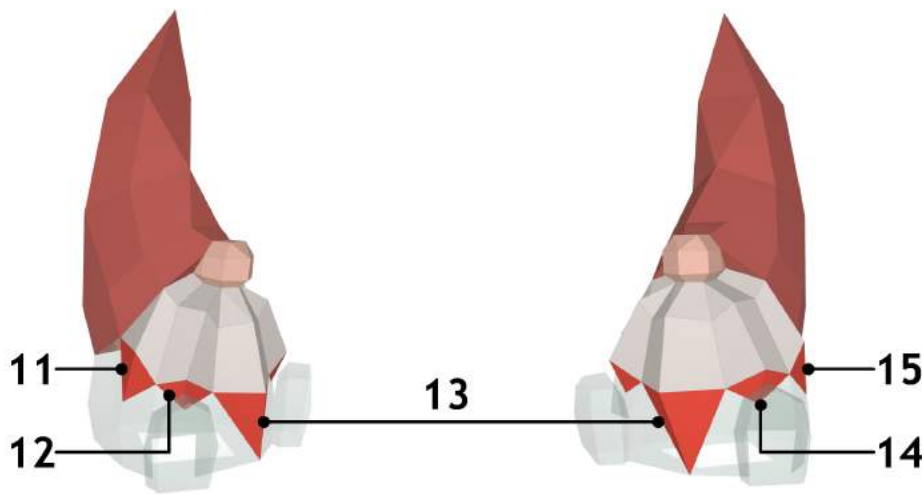


9



10





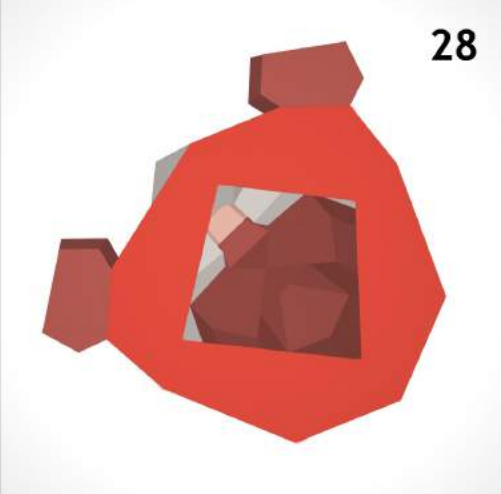
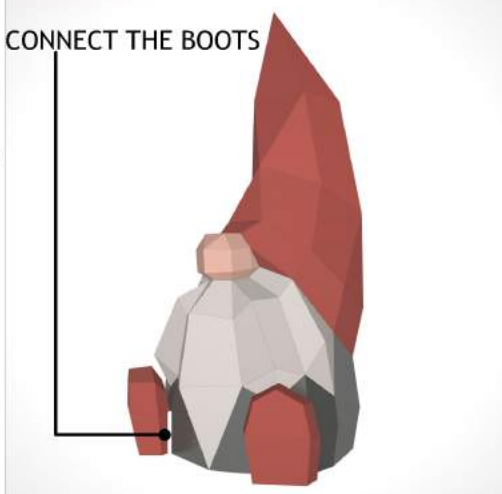
BOOTS



A - LEFT EAR



B - RIGHT EAR



**ATTABOY!
YOU DID IT!**
SHOW ME THE RESULT
ON INSTAGRAM #bumagid

